

Coronavirus disease 2019 (COVID-19) Situation Report – 60

Data as reported by national authorities by 23:59 CET 19 March 2020

HIGHLIGHTS

- Six new countries/territories/areas (African Region [2], and Region of the Americas [2], and Western Pacific Region [2]) have reported cases of COVID-19.
- To increase access to reliable information, WHO has partnered with WhatsApp and Facebook to launch a WHO Health Alert messaging service. This service will provide the latest news and information on COVID-19, including details on symptoms and how people can protect themselves. The Health Alert service is now available in English and will be introduced in other languages next week. To access it, send the word "hi" to the following number on WhatsApp: +41 798 931 892.
- The first vaccine trial has begun just 60 days after the genetic sequence of the virus was shared by China. This is an incredible achievement. To ensure clear evidence of which treatments are most effective, WHO and its partners are organizing a large international study, called the Solidarity Trial, in many countries to compare different treatments.
- WHO and Global Citizen launched #TogetherAtHome, a virtual, no-contact concert series to promote physical distancing and action for global health. Chris Martin, lead singer of Coldplay, kicked it off earlier this week with a performance from his home. More Solidarity Sessions are planned to promote health, show support for people who are staying at home to protect themselves and others from COVID-19, and encourage donations to the [COVID-19 Solidarity Response Fund](#).

SITUATION IN NUMBERS total (new) cases in last 24 hours

Globally

234 073 confirmed (24 247)
9840 deaths (1061)

Western Pacific Region

93 349 confirmed (1016)
3405 deaths (28)

European Region

104 591 confirmed (17 506)
4899 deaths (816)

South-East Asia Region

918 confirmed (261)
31 deaths (8)

Eastern Mediterranean Region

20 759 confirmed (1254)
1312 deaths (151)

Region of the Americas

13 271 confirmed (4104)
178 deaths (57)

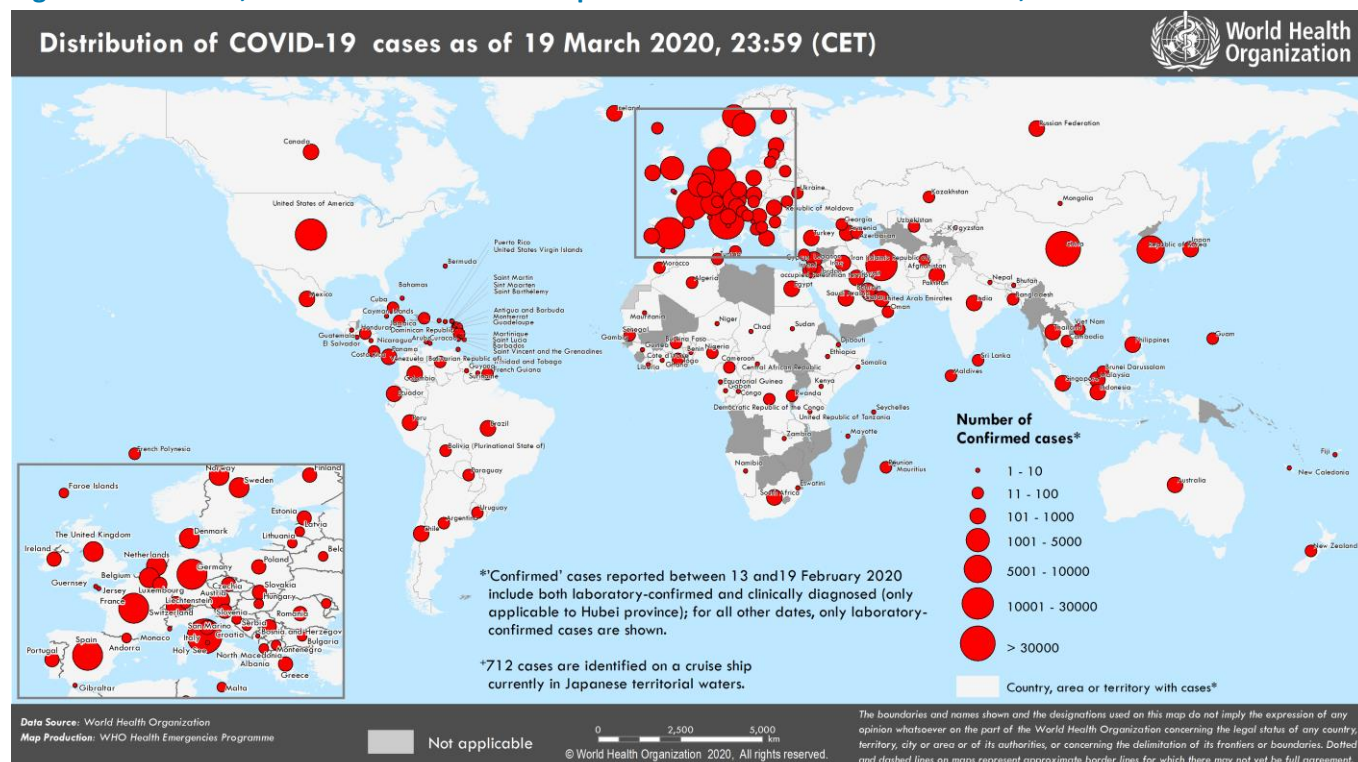
African Region

473 confirmed (106)
8 deaths (1)

WHO RISK ASSESSMENT

Global Level Very High

Figure 1. Countries, territories or areas with reported confirmed cases of COVID-19, 19 March 2020



SURVEILLANCE

Table 1. Countries, territories or areas with reported laboratory-confirmed COVID-19 cases and deaths. Data as of 19 March 2020*

Reporting Country/ Territory/Area [†]	Total confirmed ‡ cases	Total confirmed new cases ¹	Total deaths	Total new deaths ¹	Transmission classification [§]	Days since last reported case
Western Pacific Region						
China	81300	126	3253	11	Local transmission	0
Republic of Korea	8652	239	94	10	Local transmission	0
Japan	950	77	33	4	Local transmission	0
Malaysia	900	227	2	0	Local transmission	0
Australia	709	199	6	0	Local transmission	0
Singapore	345	32	0	0	Local transmission	0
Philippines	217	30	17	3	Local transmission	0
Viet Nam	85	19	0	0	Local transmission	0
Brunei Darussalam	73	17	0	0	Local transmission	0
Cambodia	47	12	0	0	Local transmission	0
New Zealand	39	19	0	0	Local transmission	0
Mongolia	6	1	0	0	Imported cases only	0
Fiji	1	1	0	0	Imported cases only	0
Territories**						
Guam	12	7	0	0	Local transmission	0
French Polynesia	11	8	0	0	Imported cases only	0
New Caledonia	2	2	0	0	Imported cases only	0
European Region						
Italy	41035	5322	3407	429	Local transmission	0
Spain	17147	3431	767	169	Local transmission	0
Germany	10999	2801	20	8	Local transmission	0
France	10877	1834	372	128	Local transmission	0
Switzerland	3863	853	33	12	Local transmission	0
The United Kingdom	3277	647	144	41	Local transmission	0
Netherlands	2460	409	76	18	Local transmission	0
Austria	1843	197	5	1	Local transmission	0
Belgium	1795	309	14	0	Local transmission	0
Norway	1552	129	6	3	Local transmission	0
Sweden	1423	144	3	0	Local transmission	0
Denmark	1132	88	6	2	Local transmission	0
Portugal	785	143	3	1	Local transmission	0
Czechia	694	172	0	0	Local transmission	0
Ireland	557	265	3	1	Local transmission	0
Israel	529	102	0	0	Local transmission	0
Greece	418	0	5	0	Local transmission	1
Finland	369	10	0	0	Local transmission	0
Luxembourg	345	135	4	2	Local transmission	0
Iceland	330	80	0	0	Local transmission	0
Poland	325	38	5	0	Local transmission	0
Slovenia	319	33	1	0	Local transmission	0
Estonia	267	9	0	0	Local transmission	0
Romania	260	14	0	0	Local transmission	0
Russian Federation	199	52	0	0	Imported cases only	0
Turkey	191	0	2	0	Local transmission	1
San Marino	126	17	14	0	Local transmission	0
Serbia††	123	41	0	0	Local transmission	0

Slovakia	123	18	0	0	Local transmission	0
Armenia	122	38	0	0	Local transmission	0
Bulgaria	94	2	3	1	Local transmission	0
Latvia	86	15	0	0	Imported cases only	0
Croatia	81	0	0	0	Local transmission	1
Hungary	73	15	1	0	Local transmission	0
Albania	70	11	2	0	Local transmission	0
Cyprus	58	0	0	0	Local transmission	1
Malta	53	5	0	0	Imported cases only	0
Republic of Moldova	49	13	0	0	Local transmission	0
North Macedonia	48	17	0	0	Local transmission	0
Belarus	46	0	0	0	Local transmission	1
Kazakhstan	46	10	0	0	Imported cases only	0
Bosnia and Herzegovina	44	8	0	0	Local transmission	0
Georgia	38	4	0	0	Imported cases only	0
Lithuania	36	10	0	0	Imported cases only	0
Azerbaijan	34	0	1	0	Imported cases only	1
Liechtenstein	25	0	0	0	Imported cases only	1
Uzbekistan	21	5	0	0	Local transmission	0
Ukraine	16	0	2	0	Local transmission	1
Montenegro	10	8	0	0	Imported cases only	0
Monaco	9	0	0	0	Under investigation	3
Kyrgyzstan	3	0	0	0	Under investigation	1
Holy See	1	0	0	0	Under investigation	13
Territories**						
Andorra	75	36	0	0	Imported cases only	0
Faroe Islands	72	14	0	0	Imported cases only	0
Gibraltar	10	2	0	0	Under investigation	0
Jersey	5	0	0	0	Imported cases only	2
Greenland	2	0	0	0	Under investigation	1
Guernsey	1	0	0	0	Imported cases only	10
South-East Asia Region						
Thailand	322	110	1	0	Local transmission	0
Indonesia	309	82	25	6	Local transmission	0
India	195	44	4	1	Local transmission	0
Sri Lanka	59	17	0	0	Local transmission	0
Bangladesh	17	7	1	1	Local transmission	0
Maldives	13	0	0	0	Local transmission	4
Bhutan	2	1	0	0	Imported cases only	0
Nepal	1	0	0	0	Imported cases only	56
Eastern Mediterranean Region						
Iran (Islamic Republic of)	18407	1046	1284	149	Local transmission	0
Qatar	452	10	0	0	Local transmission	0
Pakistan	302	61	2	2	Imported cases only	0
Bahrain	269	13	1	0	Local transmission	0
Saudi Arabia	238	0	0	0	Local transmission	1
Egypt	210	14	6	0	Local transmission	0
Iraq	177	13	12	0	Local transmission	0
Lebanon	149	29	4	0	Local transmission	0
Kuwait	148	6	0	0	Local transmission	0
United Arab Emirates	140	27	0	0	Local transmission	0
Morocco	61	12	2	0	Local transmission	0

Jordan	56	4	0	0	Imported cases only	0
Oman	39	6	0	0	Imported cases only	0
Tunisia	39	10	0	0	Local transmission	0
Afghanistan	22	0	0	0	Imported cases only	2
Djibouti	1	0	0	0	Under investigation	1
Somalia	1	0	0	0	Imported cases only	3
Sudan	1	0	1	0	Imported cases only	5
Territories**						
occupied Palestinian territory	47	3	0	0	Local transmission	0
Region of the Americas						
United States of America	10442	3355	150	50	Local transmission	0
Canada	736	167	9	0	Local transmission	0
Brazil	428	137	4	3	Local transmission	0
Chile	342	104	0	0	Local transmission	0
Peru	234	89	0	0	Local transmission	0
Ecuador	199	44	3	1	Local transmission	0
Mexico	118	25	1	1	Imported cases only	0
Panama	109	23	1	0	Local transmission	0
Colombia	108	15	0	0	Local transmission	0
Argentina	97	0	2	0	Local transmission	1
Costa Rica	87	37	1	0	Local transmission	0
Uruguay	79	50	0	0	Imported cases only	0
Venezuela (Bolivarian Republic of)	36	0	0	0	Imported cases only	1
Dominican Republic	34	13	2	1	Local transmission	0
Bolivia (Plurinational State of)	15	3	0	0	Imported cases only	0
Jamaica	15	2	1	1	Local transmission	0
Honduras	12	3	0	0	Imported cases only	0
Cuba	11	1	1	0	Local transmission	0
Paraguay	11	0	0	0	Local transmission	1
Guatemala	9	3	1	0	Imported cases only	0
Trinidad and Tobago	9	2	0	0	Imported cases only	0
Guyana	5	0	1	0	Local transmission	1
Bahamas	3	0	0	0	Local transmission	1
Barbados	2	0	0	0	Imported cases only	1
Bermuda	2	0	0	0	Imported cases only	1
Saint Lucia	2	0	0	0	Imported cases only	4
Antigua and Barbuda	1	0	0	0	Imported cases only	6
El Salvador	1	1	0	0	Imported cases only	0
Montserrat	1	0	0	0	Imported cases only	1
Nicaragua	1	1	0	0	Under investigation	0
Suriname	1	0	0	0	Imported cases only	4
Territories**						
Guadeloupe	45	12	0	0	Imported cases only	0
Martinique	32	9	0	0	Imported cases only	0
French Guiana	15	4	0	0	Local transmission	0
Puerto Rico	6	1	0	0	Imported cases only	0
Aruba	5	1	0	0	Imported cases only	0
Saint Martin	4	0	0	0	Under investigation	1
Cayman Islands	3	2	1	0	Imported cases only	0
Curaçao	3	0	0	0	Imported cases only	2

Saint Barthélemy	3	0	0	0	Under investigation	4
United States Virgin Islands	3	0	0	0	Imported cases only	1
Sint Maarten	1	0	0	0	Imported cases only	1
African Region						
South Africa	150	34	0	0	Local transmission	0
Algeria	82	10	7	1	Local transmission	0
Burkina Faso	40	14	1	0	Imported cases only	0
Senegal	38	2	0	0	Local transmission	0
Cameroon	15	5	0	0	Local transmission	0
Democratic Republic of the Congo	14	7	0	0	Local transmission	0
Nigeria	12	4	0	0	Imported cases only	0
Ghana	11	2	0	0	Local transmission	0
Rwanda	11	0	0	0	Local transmission	1
Cote d'Ivoire	9	0	0	0	Imported cases only	1
Ethiopia	9	3	0	0	Imported cases only	0
Togo	9	8	0	0	Imported cases only	0
Kenya	7	0	0	0	Local transmission	1
Mauritius	7	4	0	0	Under investigation	0
Seychelles	6	0	0	0	Imported cases only	1
United Republic of Tanzania	6	3	0	0	Imported cases only	0
Equatorial Guinea	4	1	0	0	Imported cases only	0
Congo	3	0	0	0	Imported cases only	1
Gabon	3	0	0	0	Imported cases only	1
Namibia	3	1	0	0	Imported cases only	0
Benin	2	1	0	0	Imported cases only	0
Guinea	2	1	0	0	Imported cases only	0
Liberia	2	0	0	0	Local transmission	1
Mauritania	2	0	0	0	Imported cases only	1
Zambia	2	0	0	0	Imported cases only	1
Central African Republic	1	0	0	0	Imported cases only	5
Chad	1	1	0	0	Imported cases only	0
Eswatini	1	0	0	0	Imported cases only	5
Gambia	1	0	0	0	Imported cases only	1
Niger	1	1	0	0	Imported cases only	0
Territories**						
Réunion	15	3	0	0	Imported cases only	0
Mayotte	4	1	0	0	Imported cases only	0
Subtotal for all regions	233361	24247	9833	1061		
International conveyance (Diamond Princess)	712	0	7	0	Local transmission	4
Grand total	234073	24247	9840	1061		

*Numbers include both domestic and repatriated cases

†The designations employed and the presentation of the material in this publication do not imply the expression of any opinion whatsoever on the part of WHO concerning the legal status of any country, territory, city or area or of its authorities, or concerning the delimitation of its frontiers or boundaries. Dotted and dashed lines on maps represent approximate border lines for which there may not yet be full agreement.

*Case classifications are based on [WHO case definitions](#) for COVID-19.

§Transmission classification is based on WHO analysis of available official data and may be subject to reclassification as additional data become available. Countries/territories/areas experiencing multiple types of transmission are classified in the highest category for which there is evidence; they may be removed from a given category if interruption of transmission can be demonstrated. It should be noted that even within categories, different countries/territories/areas may have differing degrees of transmission as indicated by the differing numbers of cases and

other factors. Not all locations within a given country/territory/area are equally affected.

Terms:

- **Community transmission** is evidenced by the inability to relate confirmed cases through chains of transmission for a large number of cases, or by increasing positive tests through sentinel samples (routine systematic testing of respiratory samples from established laboratories).
- **Local transmission** indicates locations where the source of infection is within the reporting location.
- **Imported cases only** indicates locations where all cases have been acquired outside the location of reporting.
- **Under investigation** indicates locations where type of transmission has not been determined for any cases.
- **Interrupted transmission** indicates locations where interruption of transmission has been demonstrated (details to be determined)

** "Territories" include territories, areas, overseas dependencies and other jurisdictions of similar status

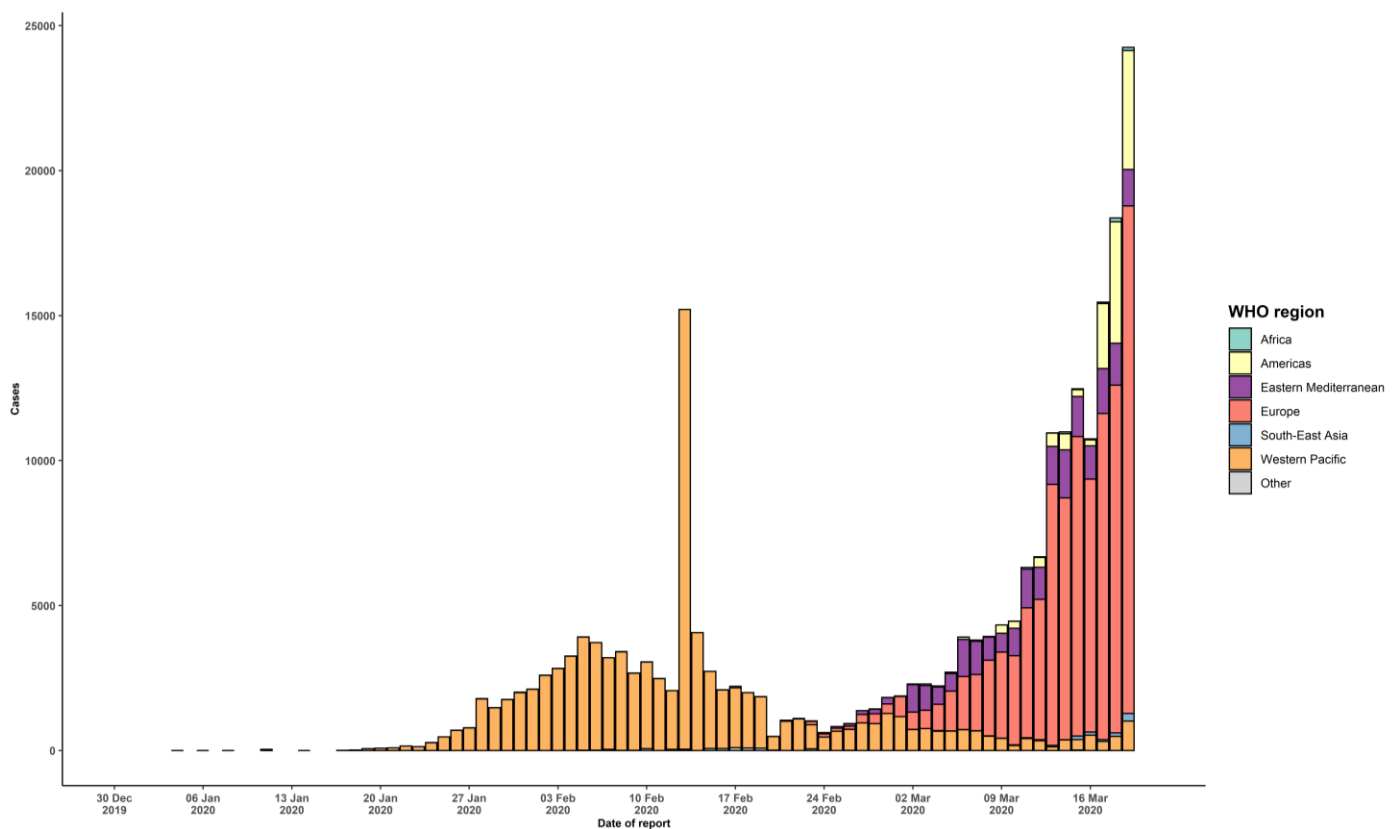
**Including 21 (8 new) cases from Kosovo^[1]

[1] All references to Kosovo should be understood to be in the context of the United Nations Security Council resolution 1244 (1999).

Due to differences in reporting methods, retrospective data consolidation, and reporting delays, the number of new cases may not always reflect the exact difference between yesterday's and today's totals. WHO COVID-19 Situation Reports present official counts of confirmed COVID-19 cases, thus differences between WHO reports and other sources of COVID-19 data using different inclusion criteria and different data cutoff times are to be expected.

New countries/territories/areas are shown in red.

Figure 2. Epidemic curve of confirmed COVID-19, by date of report and WHO region through 19 March 2020



STRATEGIC OBJECTIVES

WHO's strategic objectives for this response are to:

- Interrupt human-to-human transmission including reducing secondary infections among close contacts and health care workers, preventing transmission amplification events, and preventing further international spread*;
- Identify, isolate and care for patients early, including providing optimized care for infected patients;
- Identify and reduce transmission from the animal source;
- Address crucial unknowns regarding clinical severity, extent of transmission and infection, treatment options, and accelerate the development of diagnostics, therapeutics and vaccines;
- Communicate critical risk and event information to all communities and counter misinformation;
- Minimize social and economic impact through multisectoral partnerships.

*This can be achieved through a combination of public health measures, such as rapid identification, diagnosis and management of the cases, identification and follow up of the contacts, infection prevention and control in health care settings, implementation of health measures for travelers, awareness-raising in the population and risk communication.

PREPAREDNESS AND RESPONSE

- To view all technical guidance documents regarding COVID-19, please go to [this webpage](#).
- WHO has developed interim guidance for laboratory diagnosis, advice on the use of masks during home care and in health care settings in the context of the novel coronavirus (2019-nCoV) outbreak, clinical management, infection prevention and control in health care settings, home care for patients with suspected novel coronavirus, risk communication and community engagement and Global Surveillance for human infection with novel coronavirus (2019-nCoV).
- WHO is working closely with International Air Transport Association (IATA) and have jointly developed a guidance document to provide advice to cabin crew and airport workers, based on country queries. The guidance can be found on the [IATA webpage](#).
- WHO has been in regular and direct contact with Member States where cases have been reported. WHO is also informing other countries about the situation and providing support as requested.
- WHO is working with its networks of researchers and other experts to coordinate global work on surveillance, epidemiology, mathematical modelling, diagnostics and virology, clinical care and treatment, infection prevention and control, and risk communication. WHO has issued interim guidance for countries, which are updated regularly.
- WHO has prepared a [disease commodity package](#) that includes an essential list of biomedical equipment, medicines and supplies necessary to care for patients with 2019-nCoV.
- WHO has provided recommendations to reduce risk of [transmission from animals to humans](#).
- WHO has published an [updated advice for international traffic in relation to the outbreak of the novel coronavirus 2019-nCoV](#).
- WHO has activated the R&D blueprint to accelerate diagnostics, vaccines, and therapeutics.
- OpenWHO is an interactive, web-based, knowledge-transfer platform offering online courses to improve the response to health emergencies. [COVID-19 courses can be found here](#). Specifically, WHO has developed online courses on the following topics: A general introduction to emerging respiratory viruses, including novel coronaviruses (available in Arabic, Chinese, English, French, Russian, Spanish, Hindi, Persian, Portuguese, Serbian, and Turkish); Clinical Care for Severe Acute Respiratory Infections (available in English, French, Russian, and Vietnamese); Health and safety briefing for respiratory diseases - ePROTECT (available in English, French,

Russian, Indonesian, and Portuguese); Infection Prevention and Control for Novel Coronavirus (COVID-19) (available in Chinese, English, French, Russian, Spanish, Indonesian, Italian, Japanese, Portuguese, and Serbian); and COVID-19 Operational Planning Guidelines and COVID-19 Partners Platform to support country preparedness and response (available in English and coming soon in additional languages).

- WHO is providing guidance on early investigations, which are critical in an outbreak of a new virus. The data collected from the protocols can be used to refine recommendations for surveillance and case definitions, to characterize the key epidemiological transmission features of COVID-19, help understand spread, severity, spectrum of disease, impact on the community and to inform operational models for implementation of countermeasures such as case isolation, contact tracing and isolation. Several protocols are available [here](#). One such protocol is for the investigation of early COVID-19 cases and contacts (the “[First Few X \(FFX\) Cases and contact investigation protocol for 2019-novel coronavirus \(2019-nCoV\) infection](#)”). The protocol is designed to gain an early understanding of the key clinical, epidemiological and virological characteristics of the first cases of COVID-19 infection detected in any individual country, to inform the development and updating of public health guidance to manage cases and reduce the potential spread and impact of infection.

RECOMMENDATIONS AND ADVICE FOR THE PUBLIC

If you are not in an area where COVID-19 is spreading or have not travelled from an area where COVID-19 is spreading or have not been in contact with an infected patient, your risk of infection is low. It is understandable that you may feel anxious about the outbreak. Get the facts from reliable sources to help you accurately determine your risks so that you can take reasonable precautions (see [Frequently Asked Questions](#)). Seek guidance from WHO, your healthcare provider, your national public health authority or your employer for accurate information on COVID-19 and whether COVID-19 is circulating where you live. It is important to be informed of the situation and take appropriate measures to protect yourself and your family (see [Protection measures for everyone](#)).

If you are in an area where there are cases of COVID-19 you need to take the risk of infection seriously. Follow the advice of WHO and guidance issued by national and local health authorities. For most people, COVID-19 infection will cause mild illness however, it can make some people very ill and, in some people, it can be fatal. Older people, and those with pre-existing medical conditions (such as cardiovascular disease, chronic respiratory disease or diabetes) are at risk for severe disease (See [Protection measures for persons who are in or have recently visited \(past 14 days\) areas where COVID-19 is spreading](#)).

CASE DEFINITIONS

WHO periodically updates the [Global Surveillance for human infection with coronavirus disease \(COVID-19\)](#) document which includes case definitions.

For easy reference, case definitions are included below.

Suspect case

- A. A patient with acute respiratory illness (fever and at least one sign/symptom of respiratory disease (e.g., cough, shortness of breath), AND with no other etiology that fully explains the clinical presentation AND a history of travel to or residence in a country/area or territory reporting local transmission (See [situation report](#)) of COVID-19 disease during the 14 days prior to symptom onset.

OR

- B. A patient with any acute respiratory illness AND having been in contact with a confirmed or probable COVID-19 case (see definition of contact) in the last 14 days prior to onset of symptoms;

OR

- C. A patient with severe acute respiratory infection (fever and at least one sign/symptom of respiratory disease (e.g., cough, shortness breath) AND requiring hospitalization AND with no other etiology that fully explains the clinical presentation.

Probable case

A suspect case for whom testing for COVID-19 is inconclusive.

- Inconclusive being the result of the test reported by the laboratory

Confirmed case

A person with laboratory confirmation of COVID-19 infection, irrespective of clinical signs and symptoms.

- Information regarding laboratory guidance can be found [here](#).